

MINIPONCHO

Diagram 1

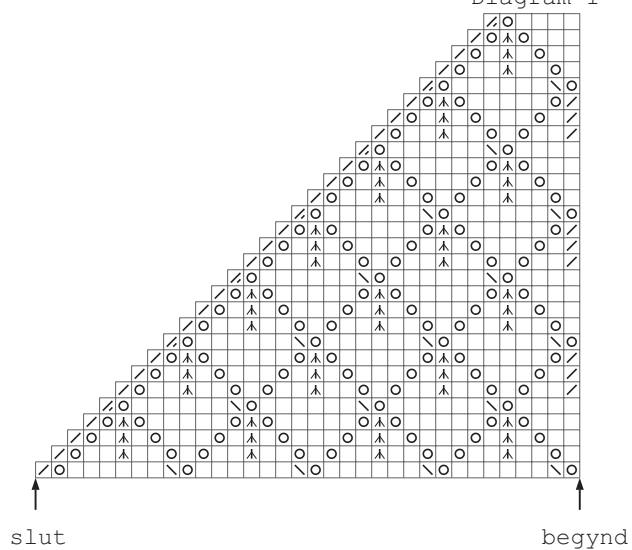
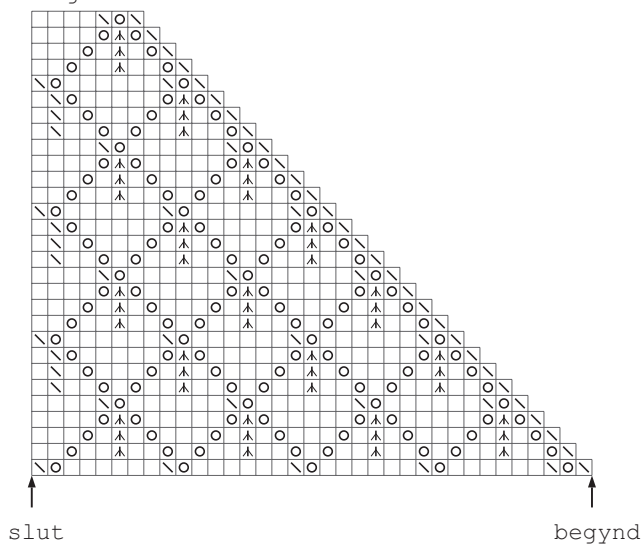


Diagram 2



□ = r på r-siden.

⊙ = sl o.

⊠ = 2 r sm.

⊞ = 1 r løs af, 1 r, træk den løse m over.

⊡ = 2 r løse af (sm), 1 r, træk de løse m over (sm).

⊞ = 3 r sm.